

CYBER SECURITY DIVISION

Safe@Work

May 7, 2020

INTRODUCTION

The whole world is going through a health emergency that will revolutionize two sectors in particular in the medium and long term: the world of work and transport. The primary requirement will be to ensure security in closed areas and controlled access in order to safeguard people and minimize risks in the event of critical situations, while ensuring companies the continuity in provision of services and in carrying out work activities.

Public and private companies and agencies will therefore be obliged to face the gradual reopening of work activities; in order to guarantee the safety and health of personnel they have to quickly and effectively equip their sites with suitable solutions to manage the presence of people in their infrastructures. However, as happened for the attacks of September 11, 2001, this emergency is not only a contingent problem, but will force companies to consider the adopted measures as an integral part of company policies, to be managed synergistically with the other aspects of physical and cyber security

A company or an agency that procedurally and technologically implements this new concept of extended and convergent security, will be able to guarantee its infrastructures, its staff and external customers both in routine and emergency situations, safeguarding its business and increasing its reliability.



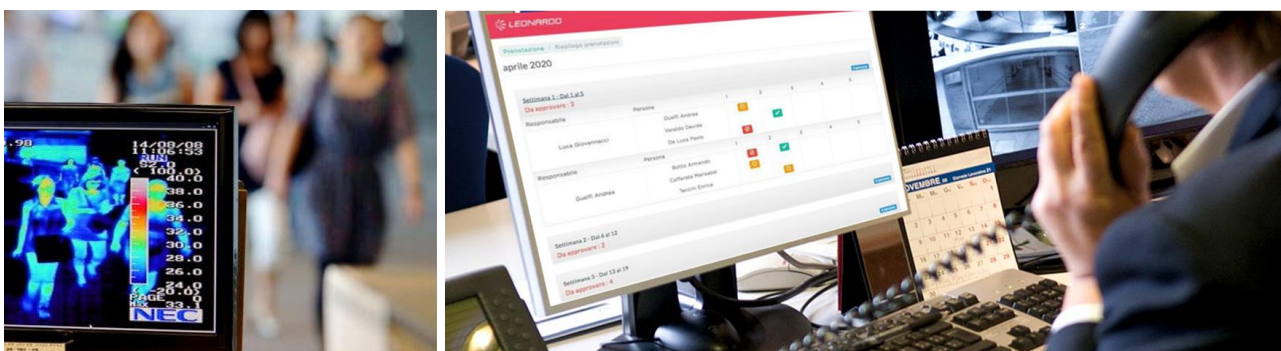
Leonardo, world leader in the cyber and physical security market, has developed the Safe @ Work digital platform to meet this new need and to provide public and private companies with a tool to effectively manage attendance planning, control of entrances and monitoring of areas in compliance with current health regulations and in order to safeguard the



operation of its sites both in emergency situations (such as that caused by the pandemic COVID-19) and in normal working conditions.

OUR SOLUTION: Safe@Work

Safe@Work aims to provide companies with a platform capable of simplifying the management of the restart phase of industrial activities starting from the so-called "Phase-2" of the emergency COVID-19 and then becoming a daily support for the safety and protection of the health of its employees.

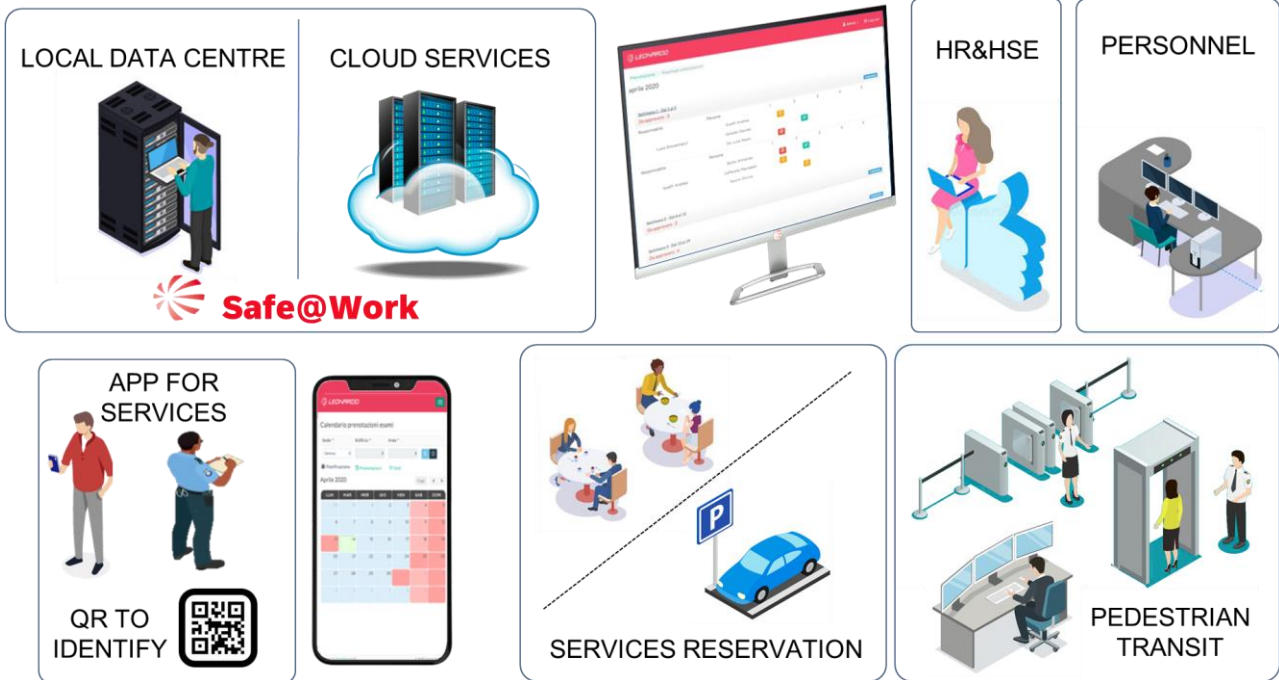


With Safe@Work, every company is able to:

- plan the attendance of employees and guests,
- manage the services for the personnel at work,
- control the site access procedures by integrating the security & health check-point at the entrance
- monitor the behavior in the various areas according to the regulations in force
- generate any alarms in order to guarantee prompt intervention by the involved roles.

The Safe @ Work platform has been designed to be operational quickly and without having to carry out invasive interventions. It can be installed locally or made available in cloud mode according to specific needs; it includes a desktop interface and an APP for smartphones.



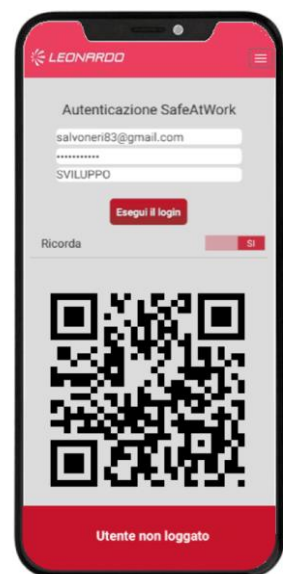


Functionalities

The platform is aimed at all the corporate roles involved in security (Security, HR, HSE, Company personnel) and includes the following main functions:

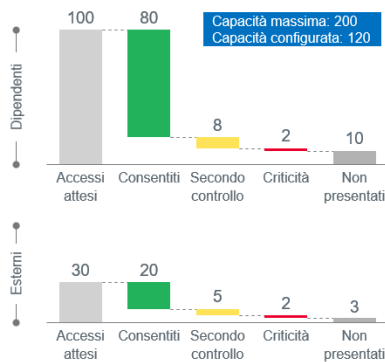
- **Attendance management:** it allows to plan and authorize visits by external guests and on-site attendance of personnel according to company policies and directives in force. Attendance management is carried out through multi-criteria logics based on established occupation parameters and layout data of the areas, inserted by the company roles in charge and totally customizable. The result is a simpler, safer and more effective planning and operational management.

Once the access authorization process has been carried out, both authorized employees and authorized external guests will receive a QR code which becomes a unique security identification used to manage the entrances at the gate, the passage to different internal areas, and any connected services. (canteen, parking space, etc.).



- Health & Security Check point at the entrance:** It allows to perform the controls at the entrance with the possibility to provide the integration of common access control systems and personnel management systems. The access authorization is verified by the Safe@Work APP or QR reader and then the additional checks are carried out (e.g. temperature measurement by the thermoscanner equipment). At the end of the procedure the platform will get for everyone the authorization to access, if cleared, and will be report any carried out control. In case of anomalies, an information alert will be sent by the platform to the personnel in charge that will proceed according to the policies of the safety procedures
- Control and monitoring of internal areas:** it allows to have the situation of attendance in the different areas, highlighting any anomalies according to the provided procedures or set up thresholds. In particular, aggregated or detailed reports will be available by the web platform in dashboard format.

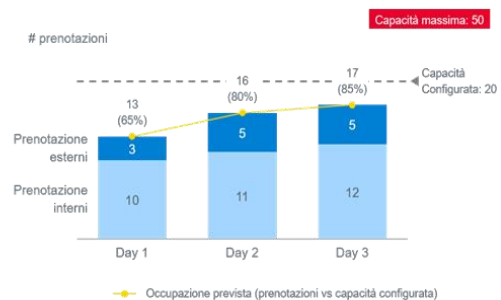
Reporting aggregato



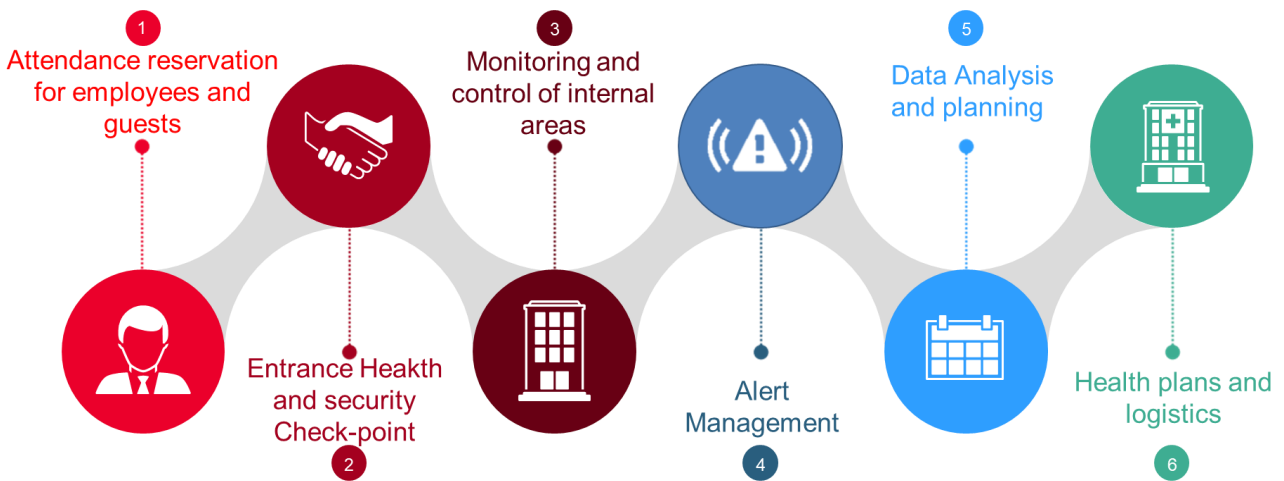
Reporting di dettaglio

Nome	Età	Funzione	Sito	Edificio
✓ M. Rossi	43	Sales	HQ	Edificio A
✓ F. Bianchi	52	Sales	HQ	Edificio A
✓ G. Esposito	29	HR	HQ	Edificio B
...				
✓ T. Russo	35	Technical	HQ	Edificio C
⚠ M. Romano	39	Sales	HQ	Edificio A
⚠ A. Ricci	56	Technical	HQ	Edificio C
✗ E. Gallo	63	Sales	HQ	Edificio A
❓ V. Greco	44	Sales	HQ	Edificio A

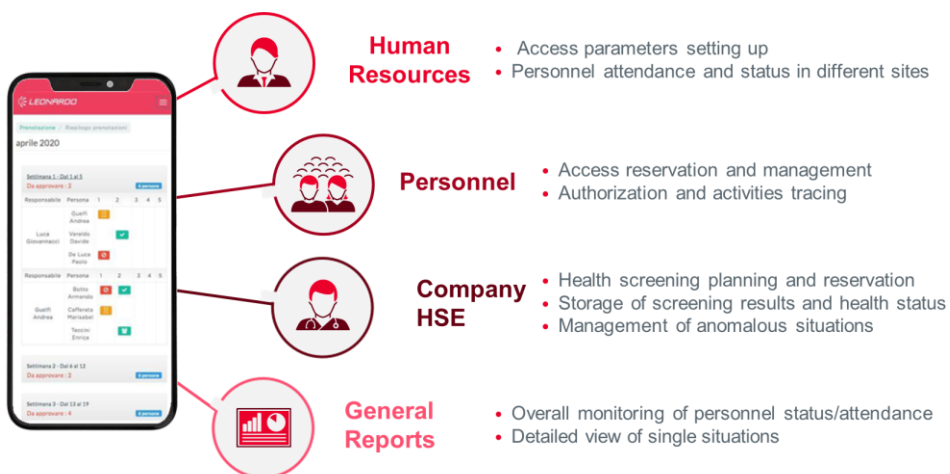
There is also the possibility of dynamically varying the level of integration and granularity of the data, by applying specific filters to modify the perimeter and the monitoring level. The result is the availability of about 10 different display modes constantly updated.



- **Alert management:** the platform will report any alarms automatically detected or reported by operators that may for example derive from anomalous situations at the entrance (non-recognition of the person or high body temperature measured by the thermoscanner) or concerning the number of people in internal areas.
- **Data analysis:** it allows to make a posteriori evaluations in statistical terms, to check attendance in single days and to have inputs for subsequent planning.
- **Health and Logistics Plans:** The platform provides the ability to schedule employee health testing campaigns or other workplace safety related services.



The platform will allow the management of information and registered users with the "need-to-know" logic, guaranteeing confidentiality and compliance with privacy regulations.



Safe@Work has the advantage of offering:

- A single integrated system for different sites, buildings and production plants
- A single platform to track all users (employees and guests)
- A turn-key solution ready to use

The open and flexible web architecture provides the possibility to integrate existing ERP and security systems, resulting in an essential add-on for the company's safety and a fundamental element for the evolution towards a convergent and integrated security.

The additional Safe@Gate system

In addition to Safe@Work platform, Leonardo is also able to provide the Safe@Gate system, a module for measure of the body temperature of people at the entrance gate in order to manage emergency situations and in general to protect worker safety .

Leonardo offers two types of solutions that can be easily installed: one based on a thermal imaging camera and one based on a thermoscanner.



The system with thermal imaging camera is able to detect the face of several people at the same time thanks to the dual camera device (optical and thermal) and to measure their temperature with absolute precision (tolerance less than 0.3 ° C). In this way it is possible to identify and signal people with suspected fever and then submit them to a medical check. This solution has two possible installations: fixed or mobile.



The thermoscanner solution is compact and simple to install and it follows the same operating principle. As an additional feature, compared to the thermal imager, it also detects the presence of the protective mask in scanned subjects. For the camera there are the installation methods on the wall or on a stand, while for the thermoscanner you can mount it on a turnstile or pedestal.

LEONARDO IS ON THE SIDE OF ALL THE COMPANIES

Safe@Work is the system that completes and integrates the initiatives that Leonardo has studied and implemented, by making available its technological experience, to support the struggle of all those who work to maintain as much as possible an operational resilience of companies and institutions:

Remote SmartOffice to offer to its customers a quick and easy access in a protected and



controlled way to their company resources, allowing their employees immediate operations thanks to the possibility of opening a remote session on their workplace desktops, having access to all their company resources as if they were working in their office

Smart Working Cyber Kit: the solution we propose to help protect the IT infrastructures from cyber attacks in this new scenario: an information documentation and a video



awareness course useful support for training and a specific Threat Intelligence (Early Warning) service designed to identify threats and vulnerabilities related to the new agile ways of working.





Piazza Monte Grappa, 4
00195 Rome
T +39 06324731
F +39 063208621

leonardocompany.com

